



World
Of Work

WORLD OF WORK OUR OFFER



ntl North Tyneside
Learning Trust

*Improving education and life chances
for all children and young people*

INTRODUCTION TO THE WORLD OF WORK OFFER

Since 2015 the World of Work team has been working with our Trust Partner Schools and a wide range of businesses and organisations to provide a careers education programme which inspires, motivates and equips all children and young people for the world of work.

As our offer stretches across all key stages, it is so lovely to be able to see the same young people as they make their way through their careers journey and to be able to introduce them to, and help them understand the world of work through a range of different activities, exploring different sectors, jobs and employers and preparing them for when they do leave school.

This booklet covers the main opportunities which we offer our Trust Partner Schools, however we are always at the end of an email or the phone if you would like to discuss how we can further support you in delivering your careers education.

To help you build careers education into your curriculum, all of our interventions are aligned with the following:

- Gatsby Benchmarks
- Skillsbuilder Skills
- CDI Framework
- PHSE Curriculum

To discuss how the World of Work team can support your school, please email:



SCAN ME TO SEE DATA SHEET



First and primary schools:
julie.scott@ntlearningtrust.org.uk



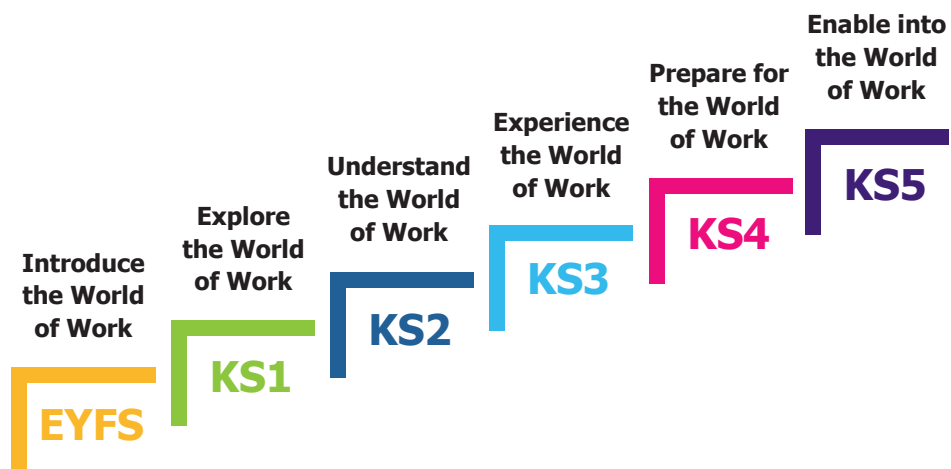
Middle, secondary and special schools:
angie.patterson@ntlearningtrust.org.uk

We look forward to working with you soon.

"I love to be able to help youngsters get the experience. I have always used the philosophy that someone needs to help them and give them the best chance in these situations and prepare them for "proper interviews". Thanks for the opportunity!"

Employer Partner

HOW THE WORLD OF WORK OFFER BUILDS



EYFS

Introduce the World of Work

Interventions designed to introduce the concept of the world of work to children using games and activities that promote discussion through play.

KS1

Explore the World of Work

Interventions designed to encourage children to explore further what jobs and careers are through workshops that use familiar job roles.

KS2

Understand the World of Work

Interventions designed to develop children's understanding of what is a job, what is a career, why have a job and the skills needed.

KS3

Experience the World of Work

Interventions designed to give pupils direct experience of jobs and careers and the opportunity to find out more about specific job roles, sectors and career pathways.

KS4

Prepare for the World of Work

Interventions designed to prepare pupils for the world of work, further education or training.

KS5

Enable into the World of Work

Interventions designed to enable students to achieve their career aspirations.



WORLD OF WORK OFFER EYFS – KS2



"I absolutely love the fact that the team turn up and run the whole event - it makes it very easy to deliver high quality careers experiences."

Careers Lead

EYFS & KS1

EYFS

Please contact us directly to discuss how we can support careers education in early years foundation stage.

Year 1: Superhero CV

This workshop is designed to explore the concept of skills linked with local employment using a superhero. The children then have the opportunity to look at their skills and link them to their own CV.

Year 2: Career Snakes and Ladders

This workshop is designed to explore how the core skills of numeracy, literacy and ICT link to careers.



KS2

Year 3: Career Top Trumps

This workshop is designed to develop an understanding of careers, skills, salary and working conditions.

Year 4: Weird and Wonderful Jobs

This workshop is designed to give children an understanding of the weird and wonderful careers that are available in the world of work today. Children will look at the skills and attributes that it will take to do some of the more quirky jobs.

Year 5: Career Blockbusters

This workshop is designed to get children to work in teams to start thinking of different careers from a sector specific area. The fastest team wins.

Year 6: Career Desert Island

This workshop is designed to promote understanding of transferable skills and career choices that you would need to run a desert island.



WORLD OF WORK OFFER KS3 – KS4



75%
of students taking part in
Think Engineering said it
helped them make a decision
about their career.

KS3, KS4 & KS5

Assessment Centre Workshop

Available to: KS5

Designed to enable students to be prepared for typical tasks and exercises they may encounter at an assessment centre. This activity is currently only available to students who are interested in pursuing an apprenticeship or employment on completion of their level 3 qualification.

Careers Fair

Available to: KS4 & KS5

Aimed at preparing students with information on options, opportunities and choices for careers and further education. Exhibitors may include businesses, apprenticeship providers, training providers, colleges and universities.

Career Speed Dating

Available to: KS3 – KS5

Employer engagement event which provides an opportunity for pupils to experience and understand a range of job roles, careers and sectors by allowing them to interview a number of ambassadors from a range of businesses, colleges and universities.

Career Workshop

Available to: KS3 & KS4 (Maximum of 90 students)

One hour employer led practical workshops delivered to full classes of students normally in a carousel type setting. The workshops normally showcase a particular sector or job and allow pupils to experience an element of the role.

CareerZone Workshops

Available to: KS3 – KS5

Employer engagement event delivered to allow students to experience hands-on practical tasks performed in a range of jobs from a variety of career sectors. Each workshop lasts 15-20 minutes and pupils will experience 3 or 4 over the course of the lesson.

Mock Interviews

Available to: KS4 & KS5

Employer engagement event designed to prepare students for interviews and the recruitment process. Each student will take part in an interview by a business professional and will then be given constructive feedback and feedback form to allow further evaluation.



Think Law, and Think Engineering

Available to: KS5

A series of masterclasses based on preparing students for the world of work with the added value of a focus on a specific sector. The masterclasses are delivered by industry experts and are delivered at business premises'. Places on both Think Law and Think Engineering are limited. There is a maximum of 20 places per cohort for students across all NTLT Sixth Forms.



WORLD OF WORK OFFER SEND AND ALTERNATIVE PROVISION

Many of our workshops and activities can be delivered to pupils in special schools or alternative provisions and can be tailored to meet the needs of the students. Please contact Angie directly to discuss your requirements.

Future Focus

Available to: KS4 & 5

Focused on pupils with Education Health and Care Plans, those attending alternative provision and those who may not achieve grade 4s at GCSE, Future Focus is aimed at preparing students with information on options, opportunities and choices for careers and further education.

Exhibitors may include businesses, apprenticeship providers, training providers, colleges and universities. This is an annual event.



97%
of those who
attended Future
Focus in 2022 found
the event useful.



This annual event allows attendees to speak to a large range of employers, apprenticeship and training providers, further and higher education institutions and Connexions advisors.



This is open to all KS3-5 Trust Partner Schools and is also open to parents and carers.

Schools or exhibitors book by emailing angie.patterson@ntlearningtrust.org.uk

OTHER CAREERS SUPPORT



"As always, the WOW team has pulled together a great group of employers and helped deliver a fantastic event for our students."

Careers Lead

CEIAG Bursary

The Trust provides a bursary of £1000 for Trust Partner Schools to enable careers leads to undertake accredited professional training at level 6 in Careers Education, Information, Advice and Guidance.



Connexions

The Trust provides Trust middle, secondary and special schools with a subsidy to enable full access to the North Tyneside Connexions service. The service provides a range of support including one-to-one IAG, training, signposting and career interventions.



Network Meetings

The Trust provides a termly networking opportunity for careers leads and teachers involved in, and responsible for careers education in schools.



Quality in Careers Standard Bursary

The Trust provides a bursary to support schools in achieving the Quality in Careers Standard.



TICE - 'A Day in the Life of...'

Available to KS3

The Trust is excited to be partnering with TICE to deliver 'A Day in the Life of...'. Available to middle school pupils, this programme showcases 'A Day in the Life of...' a variety of industry professionals by taking young students through talks, interviews and a series of activities which are specifically to do with their jobs and careers.



The TICE Programme

Available to KS4

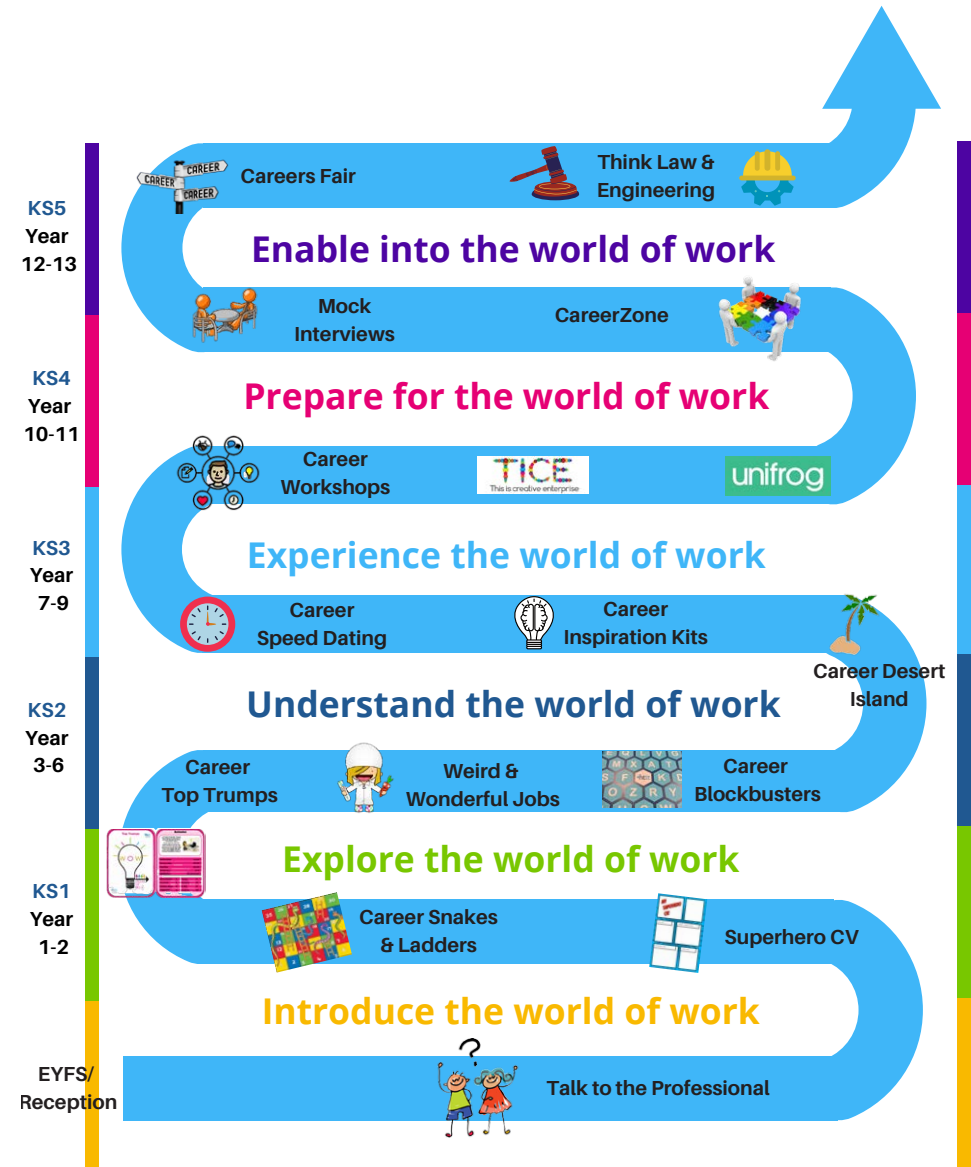
The Trust currently funds Trust Partner Schools to take part in one area of this programme delivered by This is Creative Enterprise. Designed to provide young people with the information, tools and networks they need to make informed decisions about their future, The TICE Programme is the first step in providing an industry-led overview of the commercial creative, design and digital industries.

Unifrog

The Trust fully funds Trust middle and secondary schools' annual subscription to this software which assists in the planning, development and management of careers plans and offers extensive resources to support careers education and help students record their key activities and competencies.



WORLD OF WORK CAREERS EDUCATION JOURNEY



ONLINE RESOURCES



“It’s great to have access to resources that relate to local businesses”

Teacher

ONLINE RESOURCES

Within the Partner Schools Area on the NTLT website you will find a section devoted to the World of Work which includes resources created specifically for Trust Partner Schools.

These include:

- 15 minutes Career Challenges booklets
- Careers and subject posters
- Local career videos
- Subject based careers crosswords and games
- Subject guides for linking careers to the curriculum



SCAN ME

To access, please register from your Trust Partner School email account.





Registered Office

Churchill Community College
Churchill Street
Wallsend
Tyne and Wear
NE28 7TN

Core Team Office

Norham High School
Alnwick Avenue
North Shields
Tyne and Wear
NE29 7BU

Tel: 0191 814 3899
www.ntlearningtrust.org.uk

Charity Number: 07353837

Charity Registration Number: 1143299